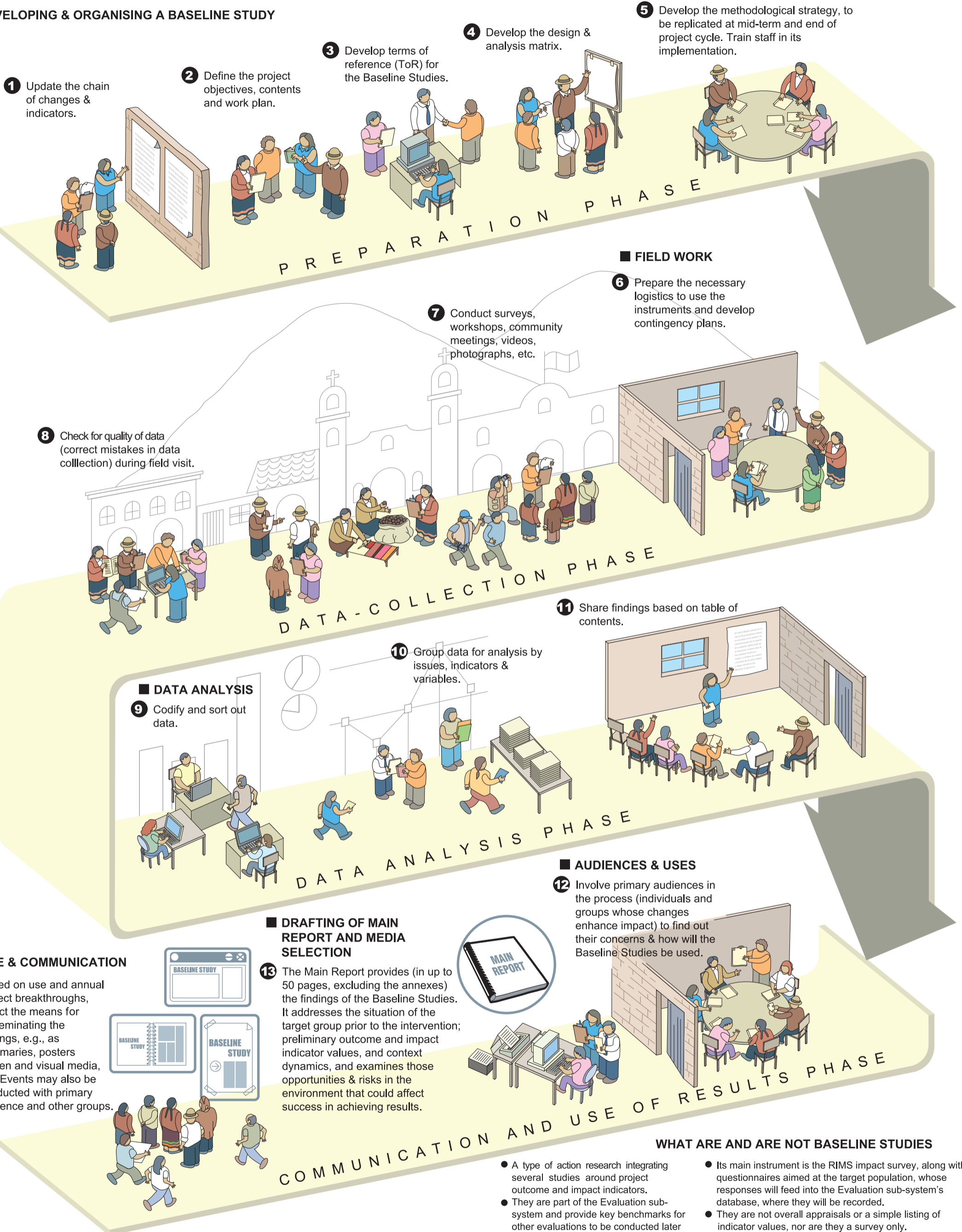


DEVELOPING A BASELINE STUDY

BASELINE STUDIES ARE THE FIRST ASSESSMENT TO BE CONDUCTED AND AS SUCH PROVIDE A SET OF EVIDENCE AND INSIGHTS ON THE START SITUATION OF THE PROJECT TARGET GROUP AND THE CONTEXT OF THE INTERVENTION, SO THAT OTHER EVALUATIONS CONDUCTED LATER ON MAY BE MEASURED AGAINST THIS INFORMATION.

DEVELOPING & ORGANISING A BASELINE STUDY



WHAT ARE AND ARE NOT BASELINE STUDIES

- A type of action research integrating several studies around project outcome and impact indicators.
- They are part of the Evaluation sub-system and provide key benchmarks for other evaluations to be conducted later on, thereby ensuring project evaluability.
- Its main instrument is the RIMS impact survey, along with questionnaires aimed at the target population, whose responses will feed into the Evaluation sub-system's database, where they will be recorded.
- They are not overall appraisals or a simple listing of indicator values, nor are they a survey only.